

TEAM CHOICES

BREAKING THE CYCLE OF
DOMESTIC VIOLENCE TOGETHER

A survivor's journey of healing

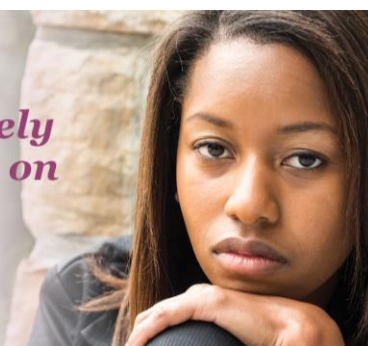
At age 22, Diamond thought her new boyfriend was a really great guy. He seemed very nice and charming but after they had been dating for six months, things took a dark turn. "He would just have random bursts of anger," Diamond admitted. "It was just little things at first that I was probably ignoring, but then it led to explosions. He just was not able to control his temper."

Diamond decided she was unsafe, and she needed to leave. When she told him, her boyfriend once again lost his temper, and this time, his anger led to a life-altering attack when he pulled out a gun and shot her in the face.

Diamond was in a coma for two weeks and spent a month in the hospital. Through determination and hard work, she made what her doctors call a full physical recovery. Once she completed her physical rehab, staff recommended she continue healing at CHOICES. "I lost everything after the shooting," she shared. "I was unsure about going to CHOICES, but I was reassured that I would be safe and they could help me heal and get back on my feet. And they were right about that."

"As far as my outside is concerned, I'm completely healed. I'm still healing on the inside."

- DIAMOND, LSS CHOICES client



CHOICES works to break the cycle of domestic violence by providing emergency shelter, critical support, counseling and other services that help victims and their children find safety, heal from their trauma and plan for a safer future.

The safety, healing and hope found at CHOICES helps victims of domestic violence like Diamond become survivors. There are so many more like her in our community that need your support. By joining Team CHOICES, you can help victims regain their freedom from domestic violence and rebuild their lives!

Domestic violence kills.

The toll of domestic violence is high – making CHOICES one of the most vital organizations in our community.



8,437 incidents*

of domestic violence were responded to by Franklin County police departments in 2024.

*Defined as violence against a family or household member.



3,025 arrests

made for charges of domestic violence by Columbus police in 2024.



18 homicides

due to domestic violence in Franklin County, including 3 children.*

*July 1, 2023 – June 30, 2024
(Ohio Domestic Violence Network)

Domestic violence cuts across all demographic and socio-economic levels. CHOICES' services are available to all victims of domestic violence, including men, members of the LGBTQ community, and those with limited English skills. Annually, about 50% of the shelter population is children and a substantial number of residents are pregnant. Typically, our shelter serves people who are low-income, such as the working poor or victims who have had access to their financial resources blocked by their abuser.

Bring healing. Give hope. Join Team CHOICES!

Team CHOICES is our year-long fundraising and community awareness initiative culminating in the fall with a focused multimedia campaign, during National Domestic Violence Awareness Month in October, to educate our community about domestic violence and how CHOICES helps. The goal of Team CHOICES is to raise \$370,000 from corporate partners, community-led events and individuals who participate in our peer-to-peer campaign. As a Team CHOICES partner, you can support this important initiative, and the victims and children CHOICES serves every day.

Freedom Partner—\$10,000+

- **Recognition as a Freedom Partner** of the 2025 Team CHOICES initiative.
- **Linked company logo on the homepage** of our Team CHOICES peer-to-peer fundraising website shared throughout our community.
- **Linked company logo on the Partners page** on our Team CHOICES peer-to-peer fundraising website shared throughout our community.
- **Logo recognition** in all Team CHOICES promotional emails.
- **Name recognition** in credits of CHOICES' fall multi-media domestic violence awareness campaign.
- **Recognition as part of our Full Plate Society** for one year at four LSS program sites, including the CHOICES shelter.
- **Opportunity to host a domestic violence educational session for your associates:** Work with LSS staff to host an in-person or virtual session to help educate your associates about the crime of domestic violence and how CHOICES helps. Speaker provided by LSS CHOICES. Please contact LSS to discuss if you are interested.

Spirit Partner— \$5,000+

- **Recognition as a Spirit Partner** of the 2025 Team CHOICES initiative.
- **Linked company logo on the Partners page** on our Team CHOICES peer-to-peer fundraising website shared throughout our community.
- **Name recognition** in all Team CHOICES promotional emails.
- Recognition as part of our **Full Plate Society** for one year at four LSS program sites, including the CHOICES shelter.

Joy Partner —\$2,500+

- **Recognition as a Joy Partner** of the 2025 Team CHOICES initiative.
- **Linked company name on the Partners page** on our Team CHOICES peer-to-peer fundraising website shared throughout our community.
- **Recognition as part of our Full Plate Society** for one year at four LSS program sites, including the CHOICES shelter.

Grace Partner —\$1,000+

- **Recognition as a Grace Partner** of the 2025 Team CHOICES initiative.
- **Linked company name on the Partners page** on our Team CHOICES peer-to-peer fundraising website shared throughout our community.

ALL LEVELS: Opportunity to create a peer-to-peer fundraising team. Engage your associates, increase awareness throughout your organization, and raise additional funds for CHOICES in your organization's name.

The need for CHOICES is great

CHOICES offers services that help victims recover from the trauma of their abuse and gain independence and self-sufficiency. Through our 24-hour crisis hotline, emergency shelter, counseling, personalized case management, housing and employment assistance and community advocates, CHOICES helps victims transform into survivors. During our 2026 fiscal year, we anticipate that ...

950

victims and children will seek refuge in the shelter

50%

of the shelter's population will be children

3,400+

emergency hotline calls will be answered

Our community needs you

CHOICES relies on support from individuals and community partners who stand with us as we help domestic violence victims and their children find safety, healing and hope for a better future. Your generous investment will help LSS CHOICES interrupt the cycle of domestic violence by responding to those in need, educating our community and advocating for social change. Please join Team CHOICES and become a partner today!

For more information or to make your commitment, please contact:
Mary Costlow at mcostlow@lssnetworkofhope.org or 614-429-5484.

